



Estimation of surface urban heat island (SUHI) effect over four populated cities of Andhra Pradesh state of India

Jagadish Kumar Mogaraju *¹ 

¹International Union for Conservation of Nature Commission on Ecosystem Management, Agro-ecosystems, India, jagadishmogaraju@gmail.com

Cite this study: Mogaraju, J. M. (2023). Estimation of surface urban heat island (SUHI) effect over four populated cities of Andhra Pradesh state of India. *Advanced Engineering Days*, 8, 64-67

Keywords

SUHI
Urban Heat Island
Climate
Temperature
Population

Abstract

This work reports the probable effect of population ingress in generating urban heat islands over four cities of Andhra Pradesh state of India. We identified twenty-six UHIs and chose four UHIs based on the population data. The period from 1961 to 1990 was selected as the reference period, and 2003 to 2020 was selected as the study period to determine the deviations in mean temperatures. We framed a methodology to filter and select the UHIs to know the effect of SUHI using online resources for data and plots that are free of cost and user-friendly. One out of four UHIs exhibited a stronger deviation in night-time temperatures than in day-time temperatures. We observed that the rise in population equally contributes to the temperature deviations over the long term in the selected areas. We conclude that the population ingress may influence land surface temperatures and induce the SUHI effect.

Introduction

Population growth and other variables can change the thermal characteristics of land, thereby generating surface urban heat islands (SUHI) [1]. Normalized Difference Vegetation Index (NDVI) and seasonal variations have influenced the SUHI effect over some of the regions in India [2]. Index-based built-up Index (IBI) and NDVI values were used to determine the land surface temperature (LST) variations that aided in explaining urban microclimate (SUHI effects) [3]. Urban agglomeration (reduction of natural resources) has a definite effect on varying LST, leading to urban heat islands that may lead to climate anomalies [4]. Increasing LST and urban population can induce a domino effect of irreversible environmental damage that may have long-term effects on the quality of life (QOL) [5, 6]. Evidently, the population ingress into urban areas in various unsustainable approaches led to reduced green cover (vegetation), leaving the inhabited terrain and UHIs [7]. Landsat 8 and Sentinel 2,3 data were used in various studies to explain the extent and effects of UHIs (SUHI effects) [8–10]. The surface urban heat islands can be characterized using simplified urban-extent algorithms (using Google Earth engine) with vegetation as a controlling factor [11]. The datasets and plots needed to investigate urban heat islands and the SUHI effect can be easily obtained online with no charges and limited effort and are user-friendly [12,13]. The present study is aligned with contemporary research [14–17] and aimed at filling the gaps in terms of filtering and selecting UHIs based on population and demonstrating the SUHI effect with reference period (1961 to 1990) and study period (2003 to 2020).

Material and Method

The datasets needed for this study were obtained from NASA (AQUA Land Surface Temperature (LST) and MODIS TERRA) and <https://open-meteo.com/en/docs/historical-weather-api>. The population data (2001/2011) was obtained from the Census of India website (<https://censusindia.gov.in>). The SUHI temperature deviations were obtained from a previous study on urban heat islands by Chakraborty and Lee, 2019. The plots for this study were prepared from the Python-based application provided by Jan Kühn, 2023 (https://github.com/yotkadata/meteo_hist). The population data collected was used to filter the areas with a high population. There are approximately 26 urban heat islands spread across the study area. We filtered out the urban heat islands with high populations and selected four out of 26 UHIs. The SUHI deviations were studied, the years

in which there is high deviation were selected, and the annual temperature deviation for the selected years was studied and plotted for reporting. The reference period considered in this study is from 1961 to 1990, as recommended by the World Meteorological Organization (WMO), and the study period is from 2003 to 2020. The study areas are given in Figure 1, and detailed methodology is given in Figure 2.



Figure 1. Harmonized Landsat and sentinel images of four Urban Heat Islands

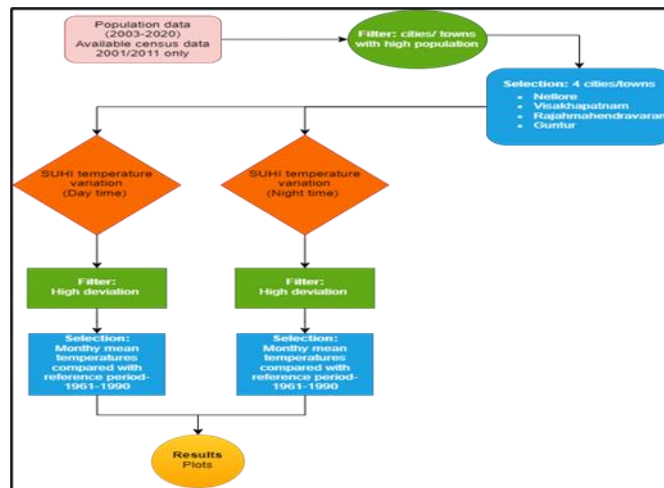


Figure 2. Method

Results

The results are given from Figure 3 to figure 6. We obtained 4 UHIs out of 26 UHIs based on the population data. They are Nellore, Visakhapatnam, Rajamahendravaram, and Guntur. The change in population from 2001 to 2011 for these cities is 28% (Nellore), 22% (Visakhapatnam), 14% (Rajamahendravaram), and 24% (Guntur). We observed an increase of 2.8 °C in Sep-Oct/2011 and a 2.6 °C increase in May/2020 compared to the reference period for Nellore UHI (Figure 4 a-c). We observed an increase of 2.2 °C in Dec/2016 and about 3.4 °C increase in May/2020 compared to the reference period for Visakhapatnam UHI (Figure 4 a-c). We observed an increase of 4.8 °C in Jun/2014, and about 2.8 °C in Nov/2020 compared to the reference period for Rajamahendravaram UHI (Figure 5 a-c). We observed an increase of 4.6 °C in May/2013 and about 3.9 °C in April/2016 compared to the reference period for Guntur UHI (Figure 6 a-c).

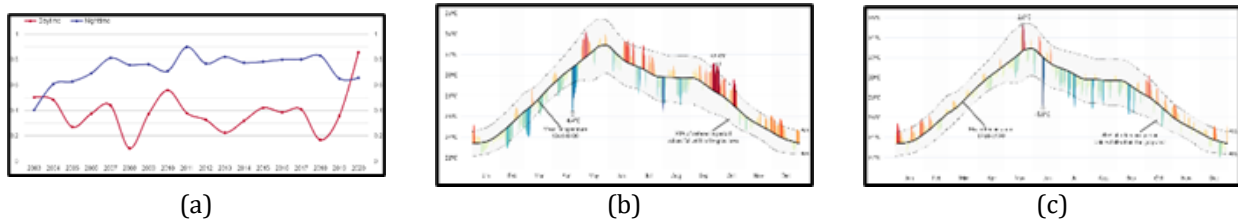


Figure 3. Nellore (UHI) (a) Annual change (°C), (b) Mean temperature variation in 2011, (c) 2020

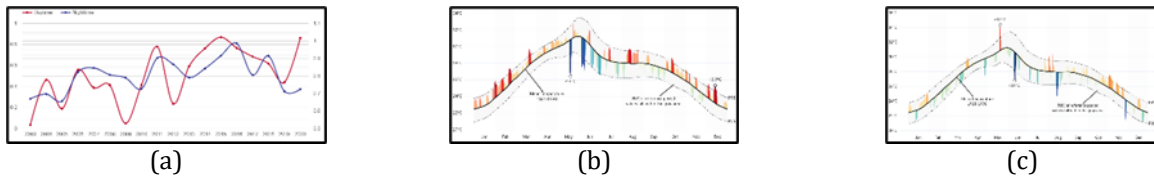


Figure 4. Visakhapatnam (UHI) (a) Annual change (°C), (b) Mean temperature variation in 2016, (c) 2020

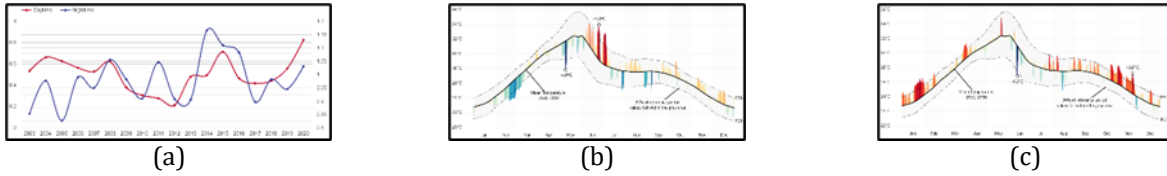


Figure 5. Rajamahendravaram (UHI) (a) Annual change (°C), (b) Mean temperature variation in 2014, (c) 2020

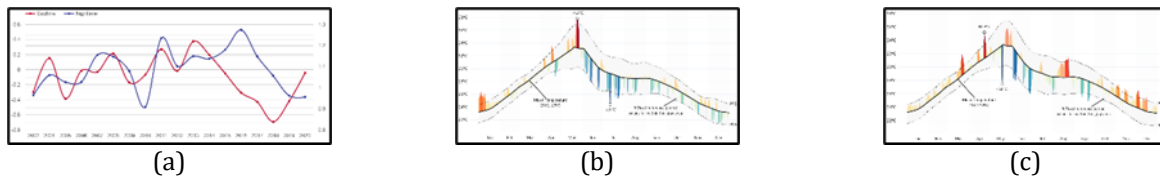


Figure 6. Guntur (UHI) (a) Annual change (°C), (b) Mean temperature variation in 2013, (c) 2016

Discussion

This work was initiated on the premise that there will be a clear indication of population growth and the SUHI effect. Keeping in view our research premise, we observed the following that may be worth discussing. Nellore UHI: The population increase of 28% from 2001 to 2011 has affected the SUHI temperature deviations (discrete), supporting our view. The night-time temperatures were relatively less affected than day-time temperatures. Visakhapatnam UHI: The population increase of 22% from 2001 to 2011 has affected the SUHI temperature deviations (discrete), supporting our view. The night-time temperatures and day-time temperatures were affected. Rajamahendravaram UHI: The population increase of 14% from 2001 to 2011 has affected the SUHI temperature deviations (discrete), supporting our view. The night-time temperatures were more deviated than day-time temperatures. Guntur UHI: The population increase of 24% from 2001 to 2011 has affected the SUHI temperature deviations (discrete), supporting our view. The night-time temperatures and day-time temperatures were affected.

Conclusion

We conclude that population growth may have a role in inducing the SUHI effect over the highly populated urban heat islands. We also opine that sustainable population ingress methods can improve the quality of life in the future. Some of the vegetation renewal practices can improve the livability in the urban zones.

References

1. Sannigrahi, S., Rahmat, S., Chakraborti, S., Bhatt, S., & Jha, S. (2017). Changing dynamics of urban biophysical composition and its impact on urban heat island intensity and thermal characteristics: the case of Hyderabad City, India. *Modeling Earth Systems and Environment*, 3(2), 647–667. <https://doi.org/10.1007/s40808-017-0324-x>
2. Bhanage, V., Kulkarni, S., Sharma, R., Lee, H. S., & Gedam, S. (2023). Enumerating and Modelling the Seasonal alterations of Surface Urban Heat and Cool Island: A Case Study over Indian Cities. *Urban Science*, 7(2), 38. <https://doi.org/10.3390/urbansci7020038>
3. Sharma, R., Pradhan, L., Kumari, M., & Bhattacharya, P. (2021). Assessing urban heat islands and thermal comfort in Noida City using geospatial technology. *Urban Climate*, 35, 100751. <https://doi.org/10.1016/j.uclim.2020.100751>
4. Vani, M., & Prasad, P. R. C. (2020). Assessment of spatio-temporal changes in land use and land cover, urban sprawl, and land surface temperature in and around Vijayawada city, India. *Environment, Development and Sustainability*, 22(4), 3079–3095. <https://doi.org/10.1007/s10668-019-00335-2>

5. Jafari-Sirizi, R., Oshnooei-Nooshabadi, A., Khabbazi-Kenari, Z., & Sadeghi, A. (2022). Determination of the Quality of Life using Hybrid BWM-TOPSIS Analysis: Case study of Tabriz (District 1,2,3 and 8), Iran. *Türkiye Uzaktan Algılama Dergisi*, 4(1), 7–17. <https://doi.org/10.51489/tuzal.1066578>
6. Khamesi-Maybodi, M. H. (2022). GIS-Based Assessment of Land Surface Temperature Changes Over Khorramabad City (Lorestan, Iran). *Türkiye Uzaktan Algılama Dergisi*, 4(2), 87–95. <https://doi.org/10.51489/tuzal.1116553>
7. Yamak, B., Yağci, Z., Bilgilioğlu, B. B., & Çömert, R. (2021). Investigation of the effect of urbanization on land surface temperature example of Bursa. *International Journal of Engineering and Geosciences*, 6(1), 1–8. <https://doi.org/10.26833/ijeg.658377>
8. Mushore, T., Odindi, J., & Mutanga, O. (2022). “Cool” Roofs as a Heat-Mitigation Measure in Urban Heat Islands: A Comparative Analysis Using Sentinel 2 and Landsat Data. *Remote Sensing*, 14(17), 4247. <https://doi.org/10.3390/rs14174247>
9. Hidalgo García, D., & Arco Díaz, J. (2021). Modeling of the Urban Heat Island on local climatic zones of a city using Sentinel 3 images: Urban determining factors. *Urban Climate*, 37, 100840. <https://doi.org/10.1016/j.uclim.2021.100840>
10. Bagyaraj, M., Senapathi, V., Karthikeyan, S., Chung, S. Y., Khatibi, R., Nadiri, A. A., & Asgari Lajayer, B. (2023). A study of urban heat island effects using remote sensing and GIS techniques in Kancheepuram, Tamil Nadu, India. *Urban Climate*, 51, 101597. <https://doi.org/10.1016/j.uclim.2023.101597>
11. Chakraborty, T., & Lee, X. (2019). A simplified urban-extent algorithm to characterize surface urban heat islands on a global scale and examine vegetation control on their spatiotemporal variability. *International Journal of Applied Earth Observation and Geoinformation*, 74, 269–280. <https://doi.org/10.1016/j.jag.2018.09.015>
12. Historical Weather API | Open-Meteo.com. (n.d.). Retrieved November 30, 2023, from <https://open-meteo.com/en/docs/historical-weather-api>
13. Historical Meteo Graphs | Jan Kühn. (n.d.). Retrieved November 30, 2023, from <https://yotka.org/projects/meteo-hist>
14. Neog, R., Acharjee, S., & Hazarika, J. (2019). Evaluation of spatio-temporal pattern of surface urban heat island phenomena at Jorhat, India. *Arabian Journal of Geosciences*, 12(10), 316. <https://doi.org/10.1007/s12517-019-4484-z>
15. He, B.-J., Wang, J., Zhu, J., & Qi, J. (2022). Beating the urban heat: Situation, background, impacts and the way forward in China. *Renewable and Sustainable Energy Reviews*, 161, 112350. <https://doi.org/10.1016/j.rser.2022.112350>
16. Muthiah, K., Mathivanan, M., & Duraisekaran, E. (2022). Dynamics of urban sprawl on the peri-urban landscape and its relationship with urban heat island in Chennai Metropolitan Area, India. *Arabian Journal of Geosciences*, 15(23), 1694. <https://doi.org/10.1007/s12517-022-10959-w>
17. Nikkala, S., Peddada, J. R., & Neredimelli, R. (2022). Correlation analysis of land surface temperature on landsat-8 data of Visakhapatnam Urban Area, Andhra Pradesh, India. *Earth Science Informatics*, 15(3), 1963–1975. <https://doi.org/10.1007/s12145-022-00850-3>